



## Laboratory Guidebook Notice of Change

Chapter new, revised, or archived: MLG 41 Appendix 1.01

Title: FSIS Laboratory Flow Chart for Isolation and Identification of *Campylobacter jejuni/coli/lari* from Poultry Rinse, Sponge and Raw Product Samples: Direct Plating Analysis

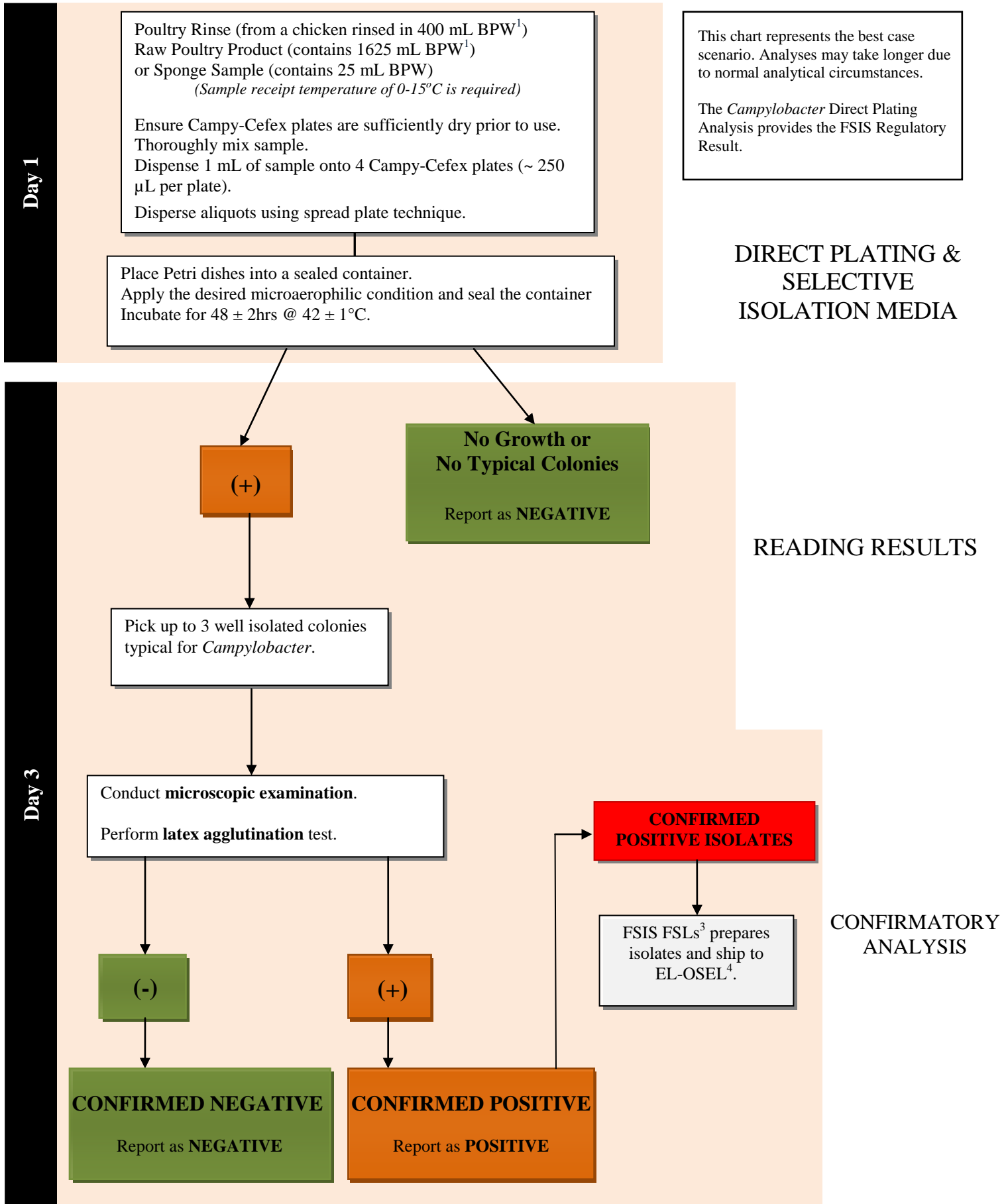
Effective Date: 08/18/14

Description and purpose of change(s):

This flow chart was issued in association with the direct plating analysis described in MLG 41.03 Isolation and Identification of *Campylobacter jejuni/coli/lari* from Poultry Rinse, Sponge and Raw Product Samples

**The methods described in this guidebook are for use by the FSIS laboratories. FSIS does not specifically endorse any of the mentioned test products and acknowledges that equivalent products may be available for laboratory use. Method validation is necessary to demonstrate the equivalence of alternative tests as detailed in the document titled “FSIS Guidance for Evaluating Test Kit Performance” available on the FSIS website.**

# FSIS Laboratory Flow Chart for MLG 41.03 Isolation and Identification of *Campylobacter jejuni/coli/lari* from Poultry Rinse, Sponge and Raw Product Samples: Direct Plating Analysis



<sup>1</sup> BPW = Buffered Peptone Water

<sup>2</sup> SBA = Tryptic soy agar with 5% sheep blood agar (SBA)

<sup>3</sup> FSIS FSLs = Food Safety Inspection Service Field Service Laboratories

<sup>4</sup> EL-OSEL = FSIS Eastern Laboratory-Outbreaks Section of Eastern Laboratory